

WE WERE SHOOTING FOR SUBTLE
AND TOTALLY BLEW IT

Great bass performance through thick and thin.
The role of any Surround is to keep the woofer on the straight and narrow as it moves back and forth. The straighter the woofer -- the better the fidelity. To best accommodate the longer 'throw' of the Atmos woofer, Sunfire engineers designed a unique Asymmetrical Cardiod Surround. The ACS got its name because of the varying thickness of the wall of the surround from one side to the other (shown at left). So what does this all mean to you? It means the ACS allows up to 1.8 inches of 'throw' with tight, well defined bass that combines extreme output with very low distortion and a quality of sound that is unique to Atmos. Another state-of-the-art advancement artfully executed and timelessly designed.



S P E C I F I C A T I O N S

Power Rating	1400 Watts
Frequency Response	30Hz - 100Hz
Cabinet Dimensions (with Feet)	8.5" H (21.6 cm) x 8.9" W (22.6 cm) x 10.1" L (25.7 cm)
Weight	32 lbs. (14.5 kg)
Shipping Weight	40 lbs. (18.1 kg)
Surround Name	Asymmetrical Cardiod Surround™ (ACS)
Output Level	106 dB (inc. room gain)

Features, specifications are subject to change without notice.



1969 Kellogg Avenue
Carlsbad, CA 92008-6582
760-710-0990
©2011 Sunfire

P/N SFATMB

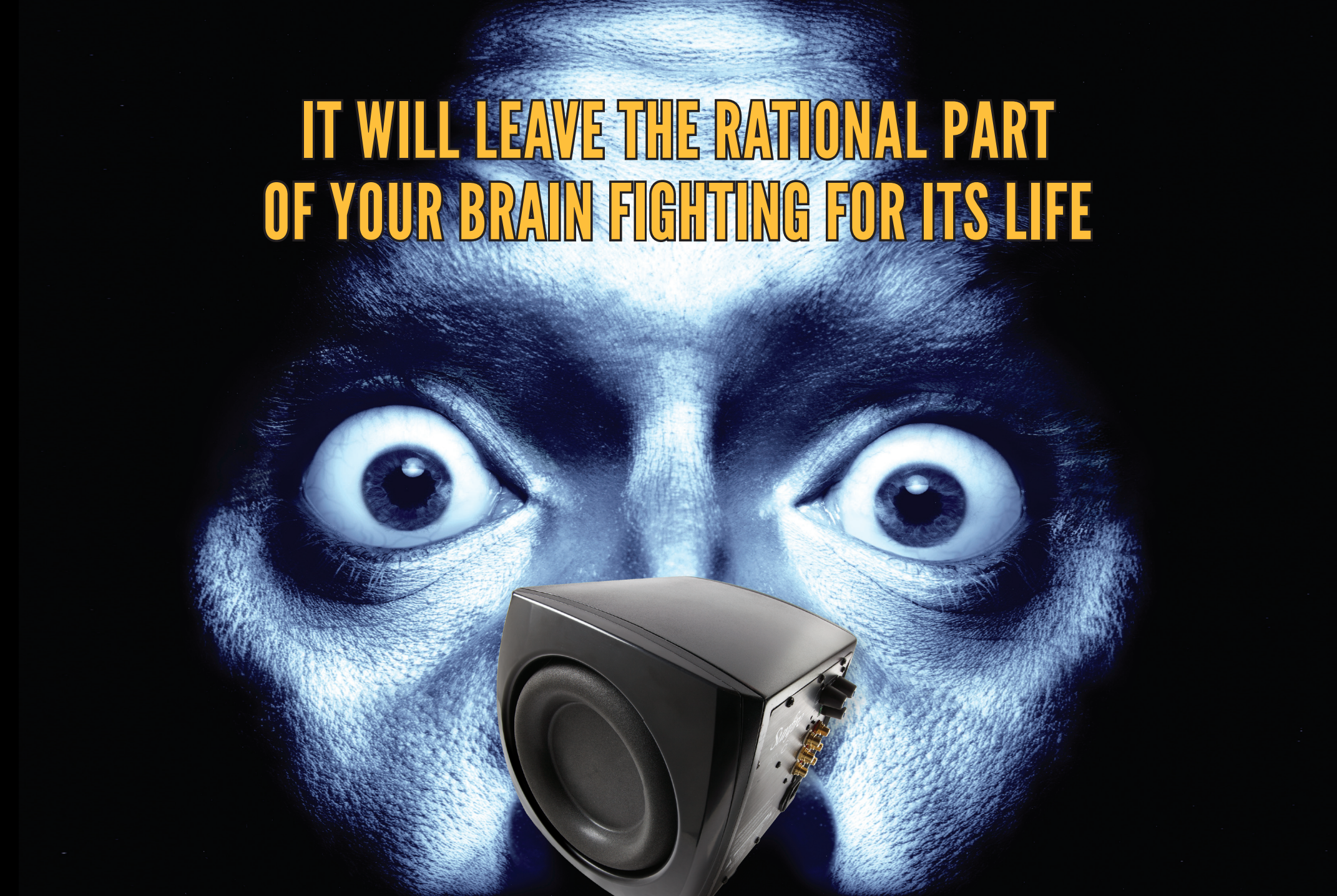
"I have spent my entire career in designing unique audio products that deliver beyond expectations."



1965--Carver's earliest years of validating the latest audio technologies and looking for unconventional approaches to amplifier design.

HOW DID WE GET HERE IN THE FIRST PLACE?

THE YEAR WAS 1972. And a graduate student named Bob Carver was about to turn an ordinary classroom assignment into the beginning of an iconic brand of home audio products. That assignment—to build a machine that would simulate earthquakes—became the springboard for a four-decade run of innovative 'firsts' and 'onlys' that have continually raised the benchmark for the entire home audio industry.



IT WILL LEAVE THE RATIONAL PART
OF YOUR BRAIN FIGHTING FOR ITS LIFE



1400 WATTS

24.4 PSI

8 INCHES TALL



Little Things Mean a Lot to Us

Introducing Atmos™. When your legacy is hallmarked by so many critically acclaimed, luxury subwoofers, it would be easy to get stuck in 'play it safe' mode. But Sunfire takes the contrary approach. Instead of falling back on our heritage alone, Sunfire is a study in constant refinement and improvement. So, like every subwoofer we've ever developed, Atmos is the smallest, most powerful choice in its class. Only now, this milestone is reached by incorporating the most advanced materials and technology available to create a one-of-a-kind high fidelity experience. Limited in production and simply unrivaled in performance, this is the all-new XT Series Atmos subwoofer.



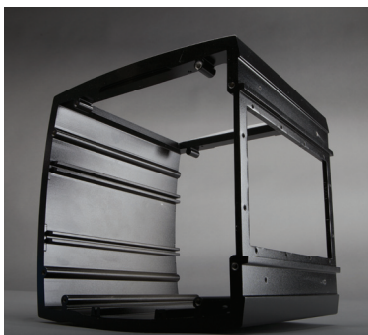
Atmos features an exclusive passive radiator that's custom designed to match the its active woofer. The result: extremely high bass output with equally impressive fidelity.

Remember David and Goliath? Sunfire's custom-designed 6.5" woofer handily outperforms every other similarly sized woofer in the world. But, did we mention it also takes on -- and beats -- virtually all of the industry's 10 and 12 inch models too? Extremely high output, remarkable fidelity and superior control--never bet against the little guy.

It's a story of epic proportions. A woofer of such magnitude produces stratospheric back-pressures--often as high as 24.4 PSI. That's good for sound--but it's also very bad for most cabinets. Which is why Atmos runs cool and reliable with a beautifully designed, incredibly tough and improbably small Aluminum cabinet that looks good anywhere.

Magnetic attraction. All voice coils deliver magnetic energy to their woofers. But, the Atmos voice coil goes one step further. Its atypical design features a unique combination of massive size and very light weight that delivers the punch and detail required for extremely accurate bass response. And isn't that exactly what you want your subwoofer to do?

Plays well with others. For some, there's no such thing as too much bass. And nobody agrees with this more than the designers at Sunfire. Which is why they built Atmos with conveniently located master/slave connectors. With just one wire, you can easily add a second Atmos sub for enough bass to satisfy even the most ambitious thrill-seeker. Could that be you?



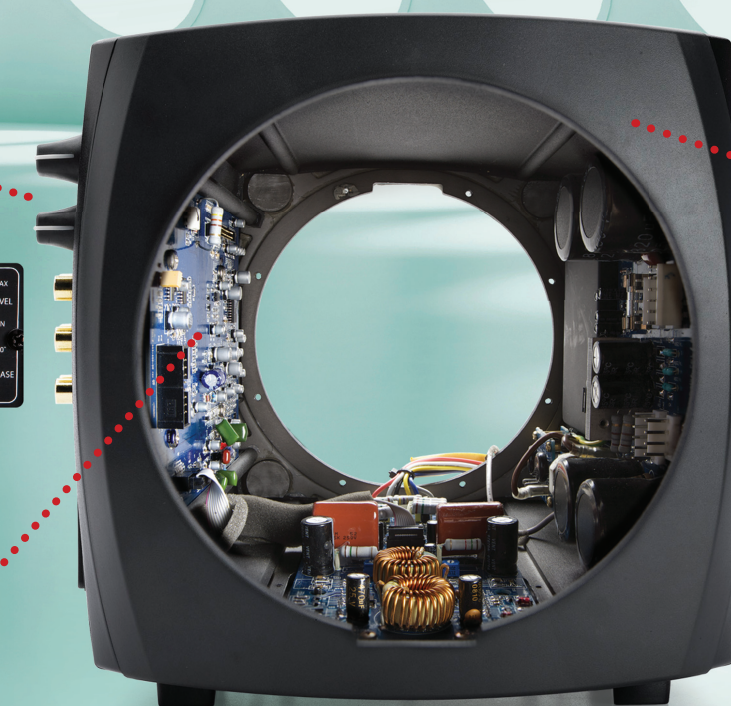
Loud, yes. Unobtrusive, of course. With 1400 Watts and a cabinet just 8 inches tall, Atmos can put out enough power for most modern living spaces - and look stylishly diminutive too! For even more of the cleanest bass around, you can easily connect two Atmos subs with one single wire and go where few have dared to before.

Atmos Also Has An Inner Beauty

Since no two rooms are alike, the quality of the sound -- especially bass -- is directly attributable to how carefully you equalize your subwoofer at setup. That's why Atmos features and an auto-room equalizer circuit which automatically adjusts the subs response to best suit the room acoustics for maximum bass quality.



FEA (Finite Element Analysis) pinpointed the ideal location for the redesigned Tracking Downconverter amplifier, resulting in higher fidelity and greatly reduced distortion.



Home Sweet Home. A scientifically-designed aluminum cabinet is the home to the heartbeat of Atmos. FEA (Finite Element Analysis) science was used to identify the varying thicknesses required to handle the gargantuan backpressures created by the sub's extreme woofer movement.

SOME THINGS SHOULD NEVER GO **BUMP** IN THE NIGHT

Perhaps nothing illustrates Sunfire's attention to detail better than our Anti-Resonate Custom Foot. And why does anyone need one of these (or actually four of them) on their subwoofer? Well, when your subwoofer puts out the kind mind-numbing power that Atmos does, it might decide to physically 'walk' during performance. To solve this unpleasantry, Sunfire engineers carefully studied the 'stick to the road' requisites of automobile tire treads. The result is a foot that looks and performs like a car tire. And a subwoofer that will be in the same place in your room at the end of the movie as it was at the start.

